

## Summer A Newsletter



'Love one another, as I have loved you.' John 13 v 34

### Welcome Back

Welcome back to school!

We hope that you had a wonderful Easter break and had some time to rest and recuperate after a very busy spring term here at Antrobus. We have so many things to celebrate and be thankful for as we reflect on the last half term. Our pupils received a number of enrichment activities from school trips, BTales pantomimes, class sharing worships, Mother's Day afternoon, sporting competitions and a church service where we performed the Easter play 'Three Trees'. We have a number of new faces this term as our numbers continue to grow, so please take the time to welcome our new families as you see them on the playgrounds in the morning and afternoons at pick up times.

### PTA



A huge thank you to our wonderful PTA for their continued hard work. Pie and Quiz night was the biggest and best yet, raising over £1000 for our school. The children loved the Easter disco and egg decorating competition and I am sure that anyone who received a Mother's Day afternoon tea box was very happy with the tasty treats inside their box.

Please keep an eye out for our brand-new forest school shelter which the PTA have funded. It is being installed on Wednesday 17<sup>th</sup> April so it is in place ready for our summer forest school sessions.

As we look to the summer term the main event is our annual sports day and village Rose Queen Fete. Our school healthy week is going to be the week commencing 10<sup>th</sup> June with sports day on Friday 14<sup>th</sup> June. If you are able to support the morning events in school or the set up for our BBQ event please contact Lorna and Friends of Antrobus or speak to the school office.

The village Rose Queen Fete is on Saturday 6<sup>th</sup> July. School will be walking in the procession with our banner and balloons so please save the date and join us. Last year we had the biggest uptake of support and we want to continue to build on this. Maypole and singing practise will be held in school time and on the day Katie L will oversee these elements. All pupils who want to join in with these are welcome to. More information will come out early in the summer term.



SAVE THE DATE

**Friday 14<sup>th</sup> June**



"Love one another; as I have loved you."  
John 13:34

Our Christian Value this half term is  
**Service**



We will be discussing this in our daily collective worship slot at 9am. We will share examples from the Bible and daily life as a means of teaching our Christian Values, and we will celebrate successes on Fridays where 'Good Samaritan' awards will be presented.

At the end of each half term, we award our special Christian Value of the half term trophy.



Last half term it was awarded to Emilia based on the value of Justice. Emilia is a joy to teach! She is extremely hardworking, kind and considerate young lady who always follows the school rules. We have discussed Justice as right and wrong and the importance of needing rules and boundaries. Emilia is a model pupil to others and shows this each and every day. Well done Emilia, we are all very proud of you. 😊

We are now looking to award another member of our school family the Service trophy.

#### Key Diary dates

Please find below some key diary dates for events during our Summer A Half Term. We endeavour to give you as much prior warning as possible but please to be mindful that these may change and more may be added as the weeks go on. We will try to send reminders out but please do save these dates to your diaries.

<u>Date</u>	<u>What's happening</u>
Monday 15 <sup>th</sup> April	<b>School Opens for Summer A</b>
	Afterschool clubs will start this week.
Tuesday 16 <sup>th</sup> April	<b><u>Parents evening- Night 1</u></b>
Thursday 18 <sup>th</sup> April	<b><u>Parents evening- Night 2</u></b>
Monday 29 <sup>th</sup> April	<p><b><u>Northwich sings</u></b></p> <p>Year 5 and 6 pupils are all attending a singing event at Brio Northwich. This is part of their music curriculum, and pupils will be transported to Brio at 1:30pm on this date for afternoon rehearsals. Parents are invited to join for the evening performance. This year's theme is 'Wind in the Willows'</p>

Tuesday 30 <sup>th</sup> April	<b><u>Class 2's Sharing worship</u></b> All are invited into school to join us for this at 9am.
Wednesday 1 <sup>st</sup> May	<b><u>Dogs Trust Assembly</u></b> This is part of our preparations for Pixie to be joining our school family.
Wednesday 1 <sup>st</sup> May	<b><u>Dodgeball Competition at Leftwich High</u></b> This is an indoor event for a group of 6-10 pupils which aims to finish at 5pm.
Friday 3 <sup>rd</sup> May	<b><u>The Big Antrobus Litter Pick</u></b> Pupils will take some time today to litter pick around our school grounds and also the village park and shop area. This is part of the whole village initiative and we are working in collaboration with the Parish council.
Wednesday 8 <sup>th</sup> May	<b><u>Golden Mile</u></b> This is open to all pupils from Year 1 – Year 6 and is a mass participation event at Leftwich County High School. Year 1&2 4pm Year 3&4 4.15pm Year 5&6 4.30pm Finish time 4.45pm
Week commencing Monday 13 <sup>th</sup> May	<b><u>Year 6 SATs week</u></b> Wishing our wonderful Year 6 pupils all the luck as they complete their SATs exams this week in school.
Tuesday 21 <sup>st</sup> May	<b><u>History Themed Day</u></b> Pupils will spend the day learning about different aspects of history. This day is designed by the staff to help raise the profile of history in school. We will focus on key historical figures and events that typically we have not covered in our curriculum.
Wednesday 22 <sup>nd</sup> May	<b><u>OPEN DAY</u></b> If you are able to help out by spreading the word of our open day we would really appreciate it. We would also love one or two parent helpers to help speak to prospective parents who may have questions.
Thursday 23 <sup>rd</sup> May	<b><u>British Values Day</u></b> Children are to come to school dressed in red, white or blue. Mrs Hughes is busy planning a day to promote British Values and raise their profile in school.

### **Gentle reminders**

Thank you for not using the disabled parking bays and being mindful of keeping those areas of the car park clear for those who are in receipt of a blue badge. The village is continuing to monitor this situation, but I would like to thank you for the noticed improvement.



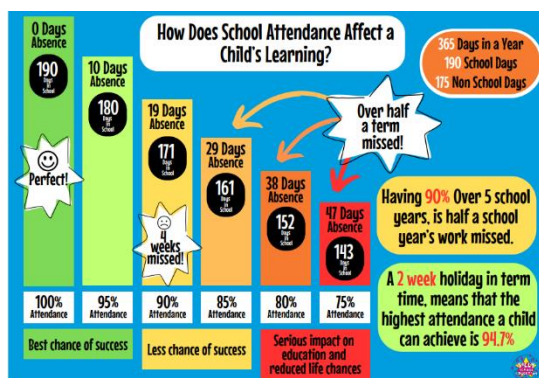
### Attendance Matters

Please note that the school gate opens at 8:45am. This gives a 15minute window until the register is closed and late marks allocated.

**From 9:15am the school registers will be marked as an unauthorised absence.**

Please endeavour to be on time to school each day. If you need any support, please contact the school office or our family support worker Suzanne King on [sking@antrobus.cheshire.sch.uk](mailto:sking@antrobus.cheshire.sch.uk)

Staff will close the gate promptly as we will be having daily collective worship at 9am in the school hall.



### After School Clubs

Our enrichment curriculum for this half term is as follows:

**Monday** School newspaper club - Mrs Almond

**Wednesday**  
Lunchtime Football

After School Year 6 SATs club- With Mr H

**Thursday**  
Lunchtime Athletics

After School Tri- Golf with Georgia and Top Trumps with Mrs Hughes.

**\*Please note these clubs will only run if a minimum number is reached to make them viable. If we do not reach that number clubs will unfortunately be cancelled.**

### Family Support worker



**Changing Lives Together** provides services across Cheshire, their mission is to find Innovative Solutions for Environmental and Social Challenges which Benefit our Local Communities

The **Community Groceries** are all about removing food waste, taking surplus stock from Supermarkets and Farmers. A food shop at the **Very Green Grocery** is at the low cost of **£5**, where they supply a bag of shopping up to a value of **£30**.

There is a, reduced cost, **café** available at both of the grocery locations.



They also offer, a **Help Scheme**, working with Local Authorities to provide support to those in emergency situations. **Retail** stores offer pre-loved furniture and paint. **Community Transport** to local and rural areas and much more!



<b>Address</b> The Old School House, Manchester Rd, Northwich CW9 7NS <b>Contact</b> 01606 827121 then press 5 <b>Grocery Opening Hours</b> Tuesday 6:30 pm – 7:30 pm Wednesday 10:30 am – 2:30 pm <b>Retail Opening Hours</b> Monday to Friday 9:00 am – 4:00 pm <b>Cafe Opening Hours</b> Monday to Friday 9:00 am – 2:30 pm	<b>Address</b> Winsford Community Centre, High St, Winsford CW7 2AS <b>Contact</b> 01606 827121 then press 3 <b>Grocery Opening Hours</b> Tuesday 10:00 am – 1:00 pm Thursday 4:00 pm – 7:00 pm <b>Retail Opening Hours</b> Monday to Friday 09:00 am – 4:30 pm <b>Cafe Opening Hours</b> Monday to Friday 9:00 am – 1:30 pm
--	--

If you would like further information about Changing Lives Together or if you would like to access the School Family Support service, simply drop in on a Monday morning or email Suzanne ([sking@antrobush.cheshire.sch.uk](mailto:sking@antrobush.cheshire.sch.uk)) – Thank you

Please contact Suzanne, School Family Support Worker [sking@antrobush.cheshire.sch.uk](mailto:sking@antrobush.cheshire.sch.uk), if you would like further support to access and to see if eligibility criteria is met.

### **Wrap around care**

Please note that you will need to book your children into breakfast club if you will need to drop them off prior to the gate opening at 8:45am. Any children seen to be left will be taken into school and placed in breakfast club and parents will be charged. This is due to safeguarding and ensuring pupils are not at risk. **Parents of Year 6 pupils are able to let school know via letter/email if they give permission for their child to walk or cycle to school alone.**

We have ordered a new door to be installed in our after school club so that parents can drop and pick pupils up from the wrap around care door and not the main school entrance. We will update you more on this once the door is in place.

Please make sure you contact school if you are needing our wrap around care on our new mobile number which is;

**07752503158**

**If you are running late or the children are playing on the field and staff cant hear the door bell in breakfast or afterschool club then please ring the mobile number above and it will connect you directly to Miss King or Florrie depending on the time.**